



*Where Luxury
Meets Excellence...!*



WESTERN GATEWAY

SHOWROOMS

OFFICES

SHOPS

1BHK

2BHK &

3BHK FLATS

Project By,



Harmony Vision



THE WESTERN GATEWAY OF KOLHAPUR



WESTERN
GATEWAY

Welcome To the city which boasts a rich cultural and royal heritage. Known for its historical significance, traditions, and contributions to the arts and crafts, Kolhapur has a unique identity shaped by its royal legacy.

WESTERN GATEWAY

offers an opulent lifestyle that seamlessly blends tradition with modernity. modern housing options that cater to various preferences. we propose not just a place to live, but a home where fortune and cultural richness create an unparalleled living experience.

Exclusive & Huge Showrooms, suitable for Automobiles, Jewellers, Garment Stores etc. Shops, with best amenities facilities, areas with variety of preferences, that suits for your business.

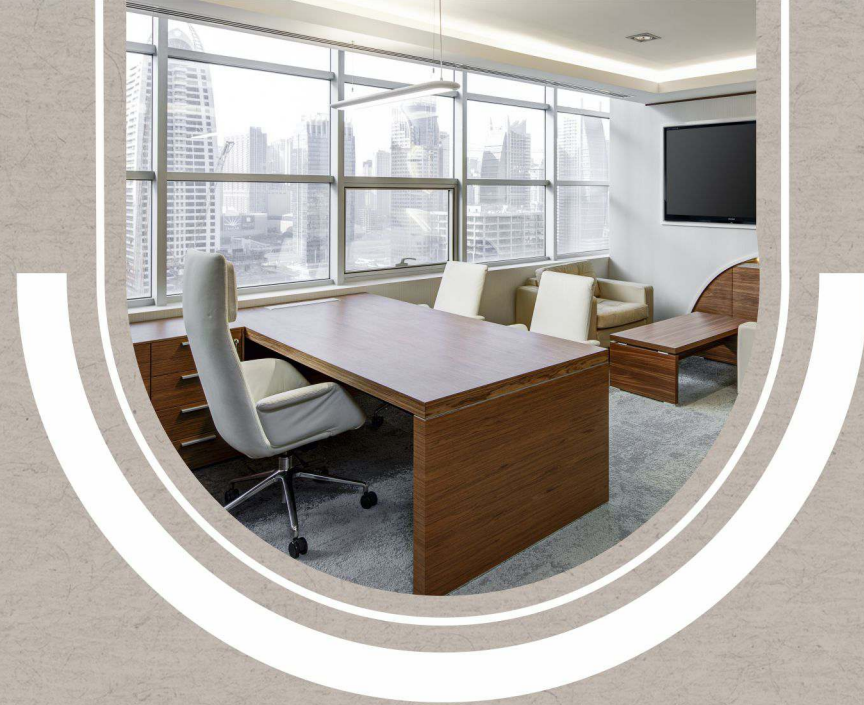
SHOWROOMS & SHOPS



CRAFTING CORPORATE SPACES



First Floor Plan



Offices

Corporate space

The modern corporate world is a blend of meticulous planning, strategic decisions, and, occasionally, a bit of luck. For many, the journey through corporate spaces is fueled by the pursuit of dreams, aiming for success and fulfillment.

at WESTERN GATEWAY we offer you a thoughtfully designed corporate spaces that enhance productivity by providing a comfortable and functional environment.



Meeting

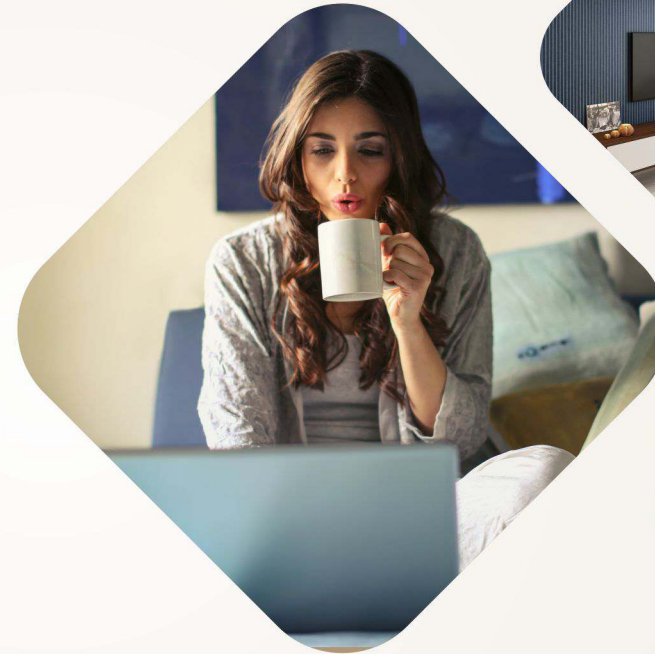
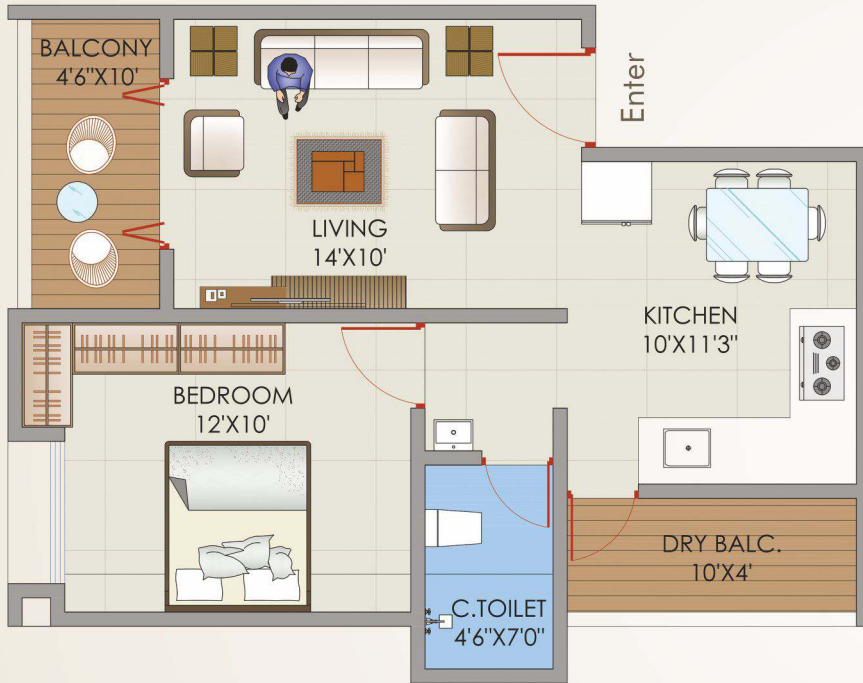


Conference



1 BHK FLATS

Luxury For The Life Time ...!



Bed Room

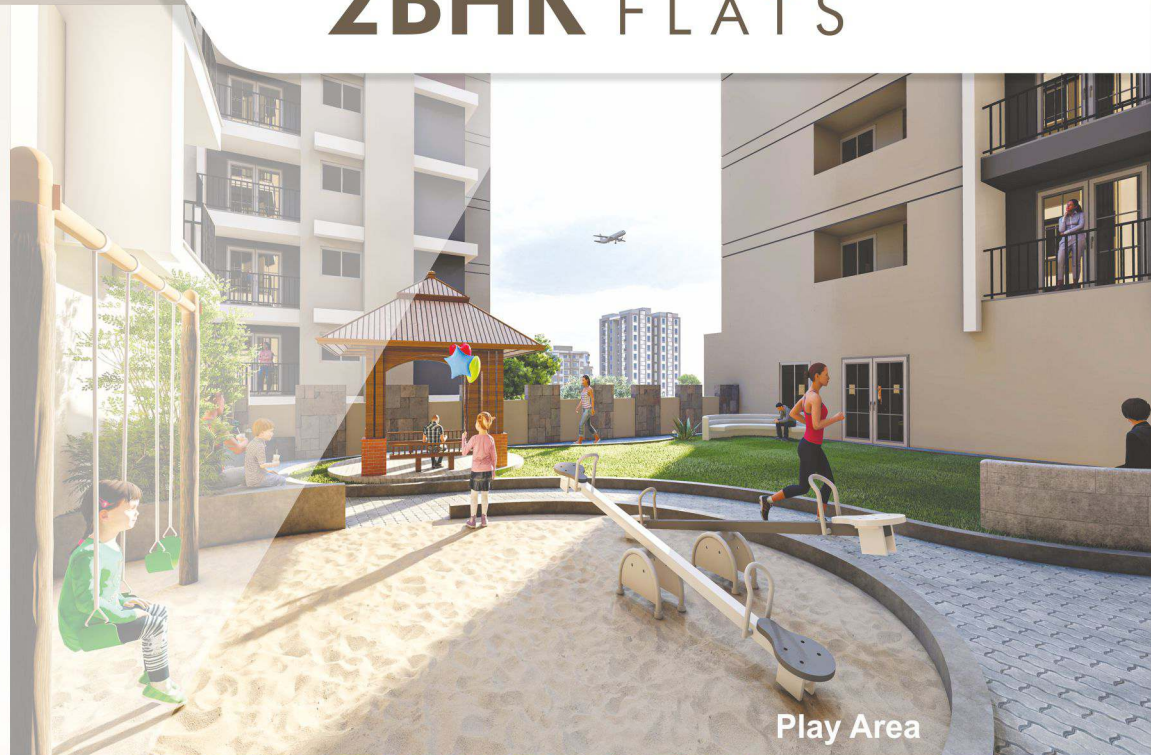
Living Room

Kitchen

Dining

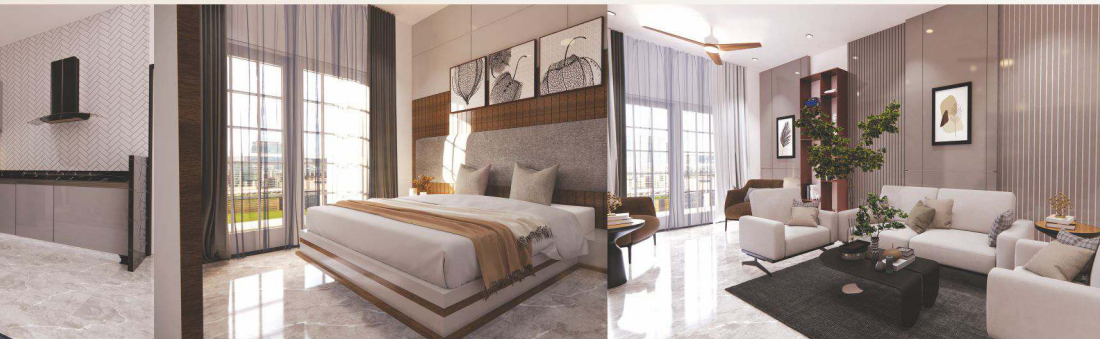


2BHK FLATS



Bed Room

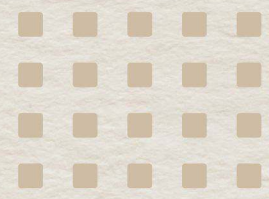
Living Room



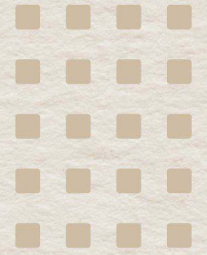


3 BHK FLATS

- 1 Living Room
- 2 Bedroom
- 1 kitchen
- 2 balcony
- 1 Common Toilet
- 1 Attach Toilet
- 1 Dry Balcony



A Promising Lifestyle in an equally radiant living space...



Luxurious 1BHK, 2BHK & 3BHK Exclusive Flats...



All Exclusive
For your *Loved
Ones* ♡♡



R.C.C. STRUCTURE :

R.C.C. Frame type structure.

MASONARY WORK :

External and internal AAC block of thick 150mm & 100mm.
External sand faced plaster double coat.
Smooth gypsum putty finish plaster internally.

WATERPROOFING WORK :

Bath toilet waterproofing in brick coba.

FLOORING, SKIRTING & DADO WORK :

Branded company vetrified tiles of 48" x 24" for living hall and 24" x 24" for remaining rooms.
Branded company antiskid ceramic tiles of 12" x 12" for toilets, bathroom dado tiles of 24" x 12" upto lintel level.
Trimix or paving blocks / tiles to parking area.
Branded company ceramic tiles flooring for landing & lobbies.
Branded company antiskid tiles of 16" x 16" or 24" x 24" for balconies
Entrance lobby in will be designer tiles branded company

KITCHEN WITH DRY AREA :

One granite parallel kitchen Otta of 8' length with stainless steel sink with ceramic tile dado.
Provision for water purifier and exhaust fan points.

DOORS :

Main entrance door in laminates with lock with fixtures and fittings.
All other doors with laminate finish & locks of standard fittings.
Steel gray granite frame for toilet doors & laminate flush door with lock.

WINDOWS :

Powder coated aluminum sliding windows of with M.S safety grills.
Steel gray granite for windows sill only.

PLUMBING / SANITARY WORK :

Branded CP fitting premium range.
Hot & cold water provision for the toilets.
Geyser point provision for each bathroom.
Concealed plumbing in toilets.
Quality plumbing and sanitary fitting with half turn cock in common toilet will be provided.
In attached toilet commode arrangement of branded make will be provided.

ELECTRIFICATION :

Concealed electrification with copper wiring in all rooms.
Branded Modular switches will be provided.
Adequate electrical points in all rooms.
Provision of electrical points for
Split AC point in master bedroom only.
TV and telephone points in hall.
Water heater & exhaust fan point in toilets.
Water purifier, exhaust fan point in kitchen.
Washing machine point in utility.

PAINTING :

Painting to all internal walls will be asian brand paint.
Waterproof Apex paint external.

COMMON FACILITIES / SITE DEVELOPMENT

- R.C.C. Under ground water storage for required capacity, arrangement of automatic water level control system.
- Overhead water tank of required capacity.
- Branded company 4 lift are provided as per required capacity.
- Power Back up for lift.
- Meter box with visible glass and grill as per MSEB Rules.
- Identical letter box and name plates at parking area.
- Attractive decorative entrance lobby.
- Automatic water level controller for under & over head water tank.





Podium Garden



Roof Top Solar



Entrance Lobby



Lift With Battery Backup

SPECIAL FEATURES : Amenities of the project

- | Podium Garden
- | Gazebo
- | Walking track
- | GYM / Yoga Hall
- | Designed entrance lobby for residential area
- | CCTV Security cameras for common area
- | Children play area
- | Indoor space for society
- | Ample car parking
- | 24 x 7 Security
- | 4 Lifts with battery backup.



Bus Stop
0 m



School
100 m



Hotel
200 m



Highway
0 m



Mall
100 m



Garden
200 m



Market
500 m



Temple
300 m



24 x 7 Security

Completed Project



SKY VISION TOWER

On Going Project



AMBAI RESIDENCY

For Bookings Call: 92091 84044 , 99755 66563

Project Architect : Architect Sanjay Adake, Kolhapur.

Project R.C.C. Designer : A.B. Kulkarni, Sangli.

Project By,



HARMONY INFRA
DESIGN & BUILD

Ar. Mr. Sanjay Adake

☎ 98224 44044



VISION
BUILDERS & DEVELOPERS
SAMMED GUNDURAO KHOT

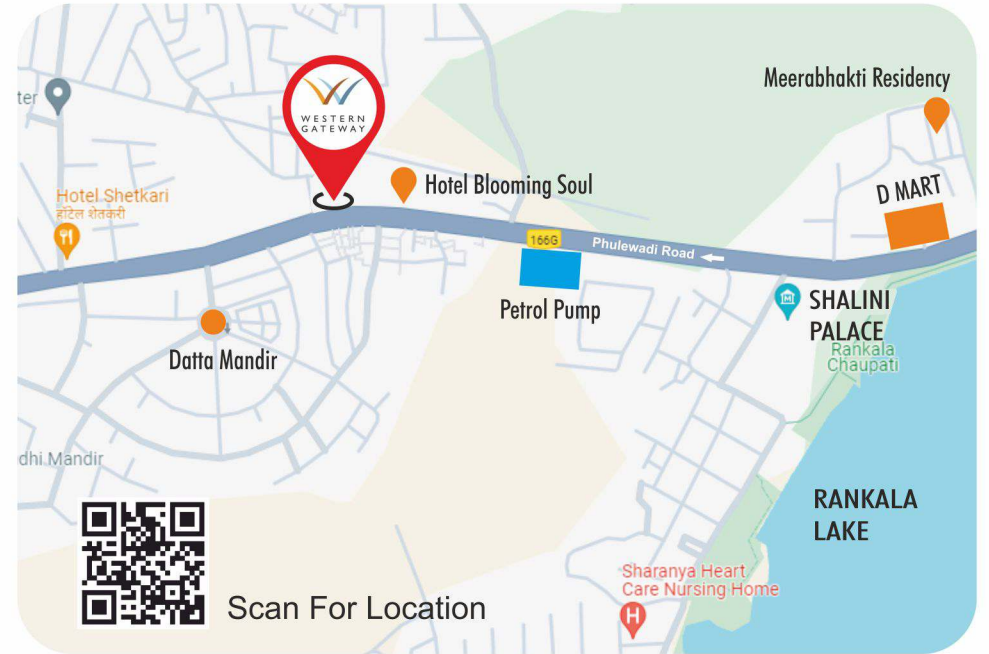
Mr. Sammed Khot (Civil Engineer)

☎ 92256 63234



Mr. Yuvraj Neharkar

☎ 82750 30074



Site Address : S. No.1209/3 , Near Hotel Blooming Soul, Shalini Palace, Gaganbawada Main Road, Phulewadi, Kolhapur.

Office Address : Harmony Vision, 'Shrishti Mahabharat' Office No.1, Near Hotel Patalacha Wada, Opp. Rajmandir Icecream Parlor, Near Collector Office, Nagala park, Kolhapur.



This brochure is purely conceptual and no legal bindings on us. all images shown in this brochure are purely illustrative purpose only. Terms & conditions apply*